

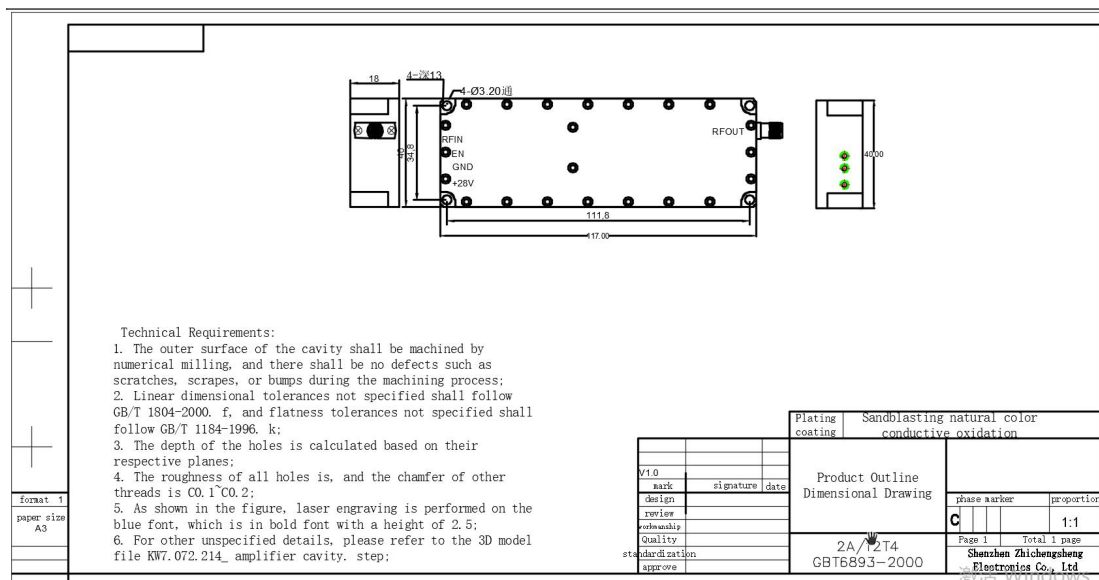
10W Module Technical Datasheet

1.RF DATA

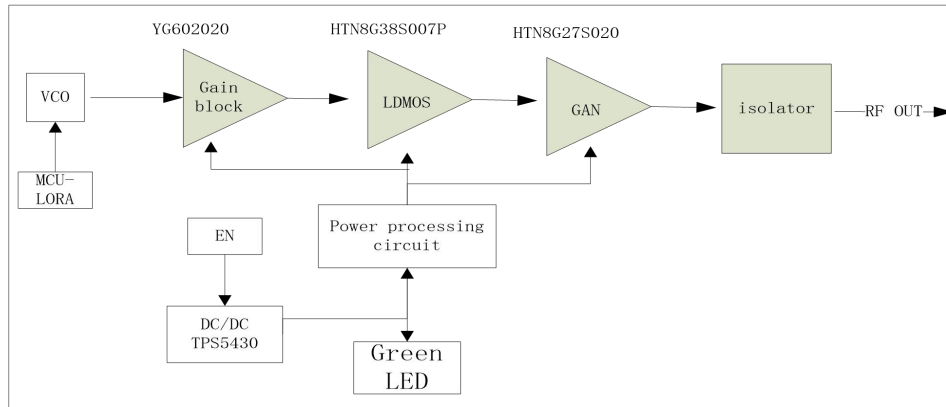
Item		Spec.	Remarks
Frequency Range		100-200MHz	Bandwidth Range±10MHz
Working Voltage		28V	24-30V
Analog sweeping speed		120K(default)	50 KHz-300Kcustomizable
Output Power (Max)		≥40 dBm	10W
Gain (Max)		40±1 dB	
Ripple in Band		≤ 3 dB	Peak
Bandwidth adjustment		Yes	By screw
Center adjustment		Yes	By screw
Enable control		Customize	3-28V
EN switch frequency		10000 times	Switching time interval ≥ 3S
Output VSWR		≤1.5	
High Low Temperatu re test	Working Temperature	-20~+65℃	Working properly
	Gain Stability	±1 dB	at -20℃~+55℃
	Power stability	±1 dB	at -20℃~+55℃
Working current		≤1.8A @+28V dc;	CW output 10W
Power supply Port		Positive and negative lines	24-28V; GND
RF output connector		SMA-Female	
LED indicator light		Power ON/OFF	
Assembly execution standard		IPC-A-610 Class 1	
Design execution standard		SJ 20668-1998	
Green LED indicator light		CD Power ON/OFF	When the power supply voltage is normal, it lights up, and when the power is turned off, it turns off
Blue LED indicator light		RF Power ON/OFF	Turn off when the output power is less than 5-10dBm, and turn on when the output power is normal

Red LED indicator light	Temperature alarm indicator light	temperature is above 100 degrees, it lights up but does not turn off the PA
Working life	10000 hours	The temperature of the chamber during operation shall not exceed 65 °C
Dimension	117*40*18 mm	
Installation Dimension	112*35*18 mm	
Screw Size	4-Ø3.20 mm	
Weight	180g	

2. Size



3. The red box indicates the location of the low-level amplification tube, which is the main heating area with a heat generation of approximately 50-60W;
4. The cavity uses copper blocks for heat conduction, evenly transferring heat to the aluminum cavity;
5. Note that when the red LED lights up, check if there are any issues with the heat dissipation, if the screws securing the PA are tightened, and if the PA and heat sink are coated with heat dissipation silicone grease
6. Technical Solution:



7. Internal product images

